



GENERATED ON APRIL 28, 2026

Trends in Academic Performance in Cherry Hill School District, New Jersey

VERSION 2025.1

This report summarizes district-level educational outcomes using data from the Stanford Education Data Archive (SEDA) from 2009-2025. Figures may contain gaps where source data are unavailable.

For more information, please visit edopportunity.org

Report created by the Educational Opportunity Project at Stanford University in collaboration with the Education Scorecard at Harvard University, using data provided by the National Center for Education Statistics and the Education Data Center. See final page for full information on data sources.

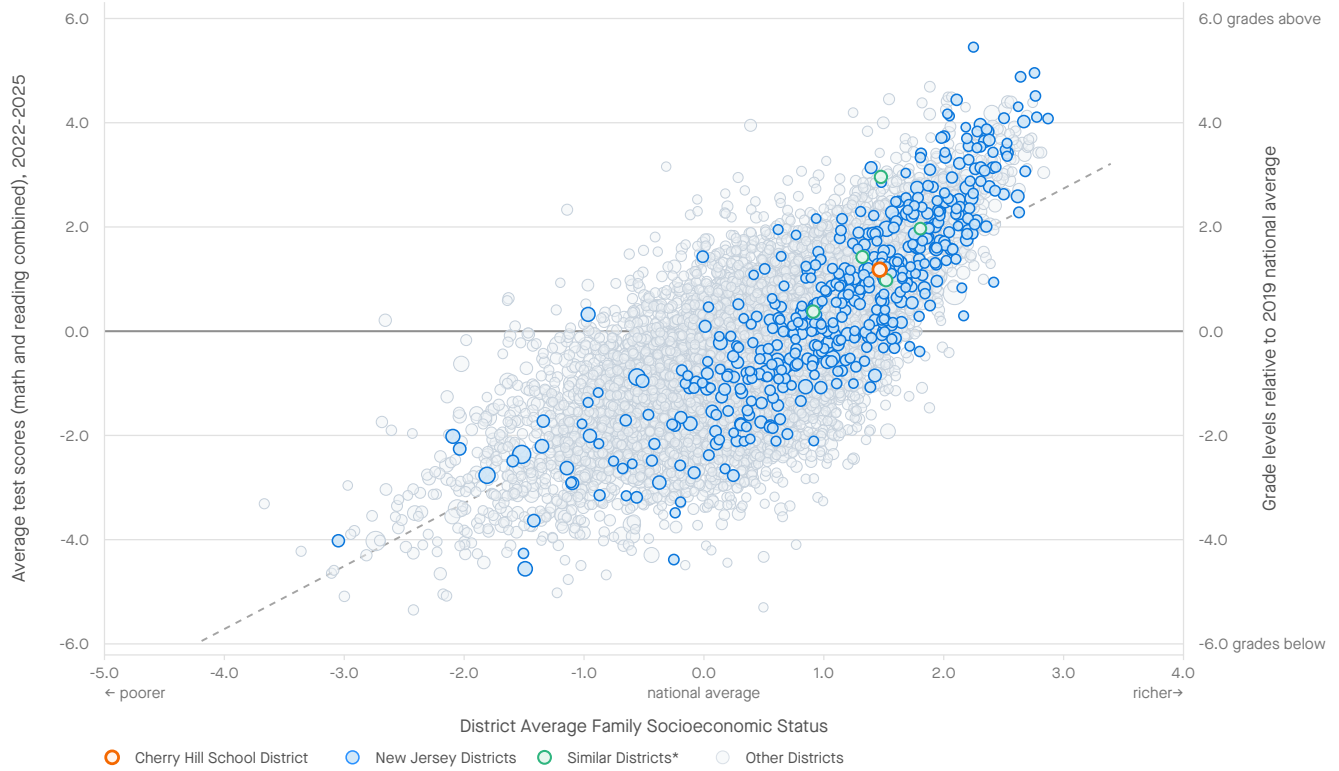


Cherry Hill School District, New Jersey



Average Grade 3-8 Test Scores, 2022-2025, by District Socioeconomic Status

Average test scores in grades 3-8 reflect the set of educational opportunities available to students in the district, including those provided by their families, preschools, neighborhoods, and elementary and middle schools.



Note: each bubble is a U.S. school district, with size proportional to district enrollment. Districts in New Jersey are highlighted. District socioeconomic status is a composite measure of a district's average family income, parental education, poverty rate, SNAP eligibility rate, unemployment rate, and female-headed household rate. Test scores are measured in grade levels relative to the 2019 national average.

Average Test Scores and Trends, 2022-2025

ALL STUDENTS

| | 2022-2025 Average Scores | 2022-2025 Trend in Test Scores |
|------------------------------------|-----------------------------|-----------------------------------|
| Cherry Hill School District | 1.18 | -0.02 |
| Similar Districts Avg.* | 1.51 | -0.06 |
| New Jersey | 0.21 | 0.01 |

Test scores are reported in grade level units, relative to the 2019 national average. For example, the first row above reads: "Students in Cherry Hill School District performed 1.18 grade levels above the 2019 national average. Test scores in Cherry Hill School District have been changing at a rate of -0.02 grade levels/year since 2022."

*Similar districts are the nearest matches within the same state based on socioeconomic status, demographics, and size. Similar districts for Cherry Hill School District are Fair Lawn Public School District, Mount Laurel Township School District, Sayreville School District, Moorestown Township Public School District, and Mount Olive Township School District.

STUDENT SUBGROUPS

| | 2022-2025 Average Scores | 2022-2025 Trend in Test Scores |
|-----------------|-----------------------------|-----------------------------------|
| White | 1.59 | 0.00 |
| Black | -0.60 | -0.07 |
| Hispanic | -0.72 | -0.05 |
| Asian | 2.58 | 0.04 |
| Poor | -0.57 | -0.10 |
| Non-Poor | 1.59 | 0.05 |
| Female | 1.27 | -0.04 |
| Male | 1.10 | 0.00 |



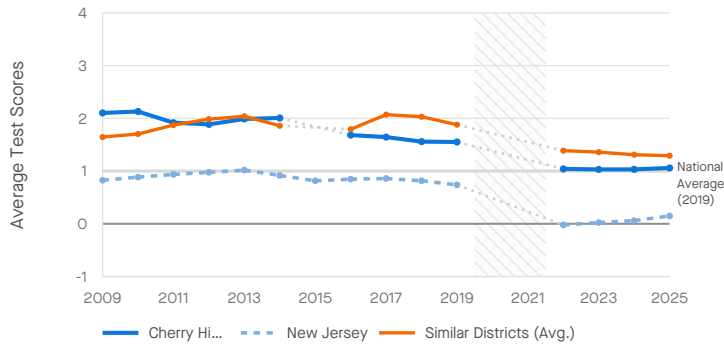
Cherry Hill School District, New Jersey

Trends in Average Grade 3-8 Test Scores, 2009-2025, by Subject and Student Subgroup

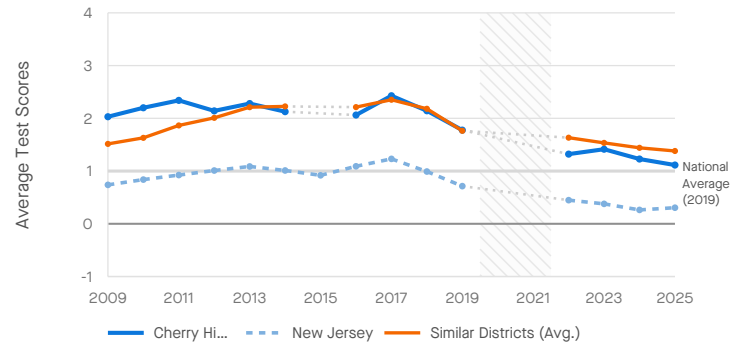


Trends in test scores may reflect changes in school quality, changes in demographics, and/or changes in out-of-school educational opportunities.

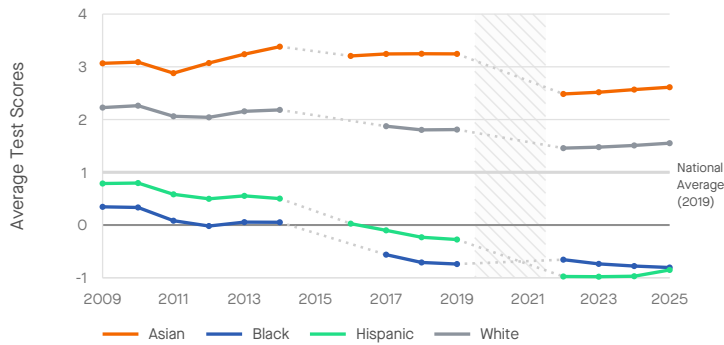
Trend in Math Scores (All Students)



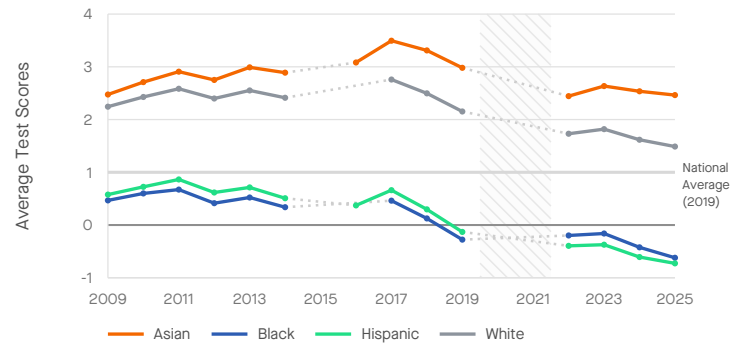
Trend in Reading Scores (All Students)



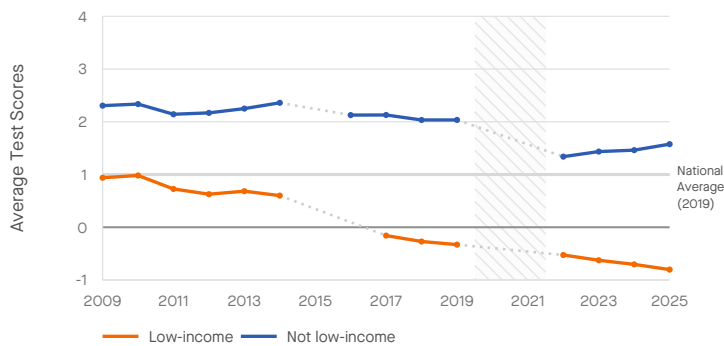
Trend in Math Scores, by Student Race/Ethnicity



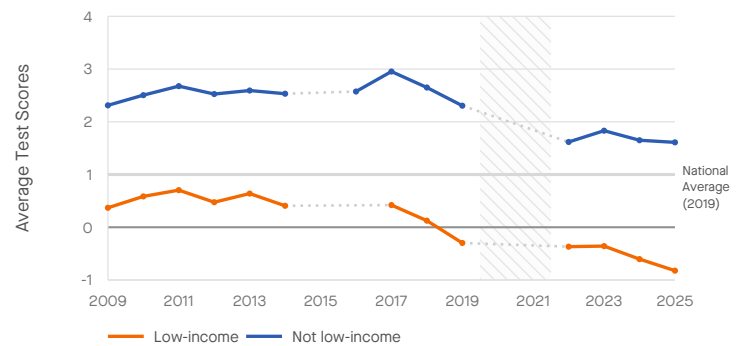
Trend in Reading Scores, by Student Race/Ethnicity



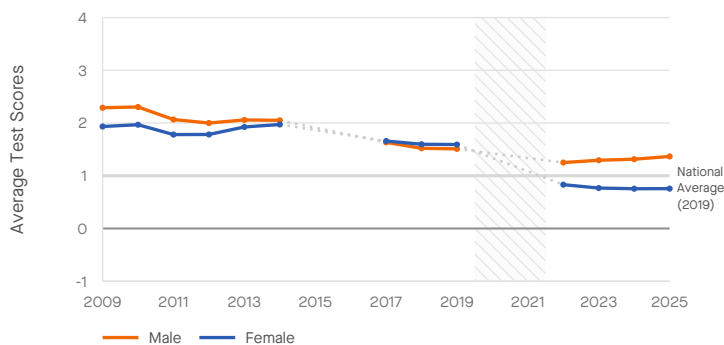
Trend in Math Scores, by Student Income Level



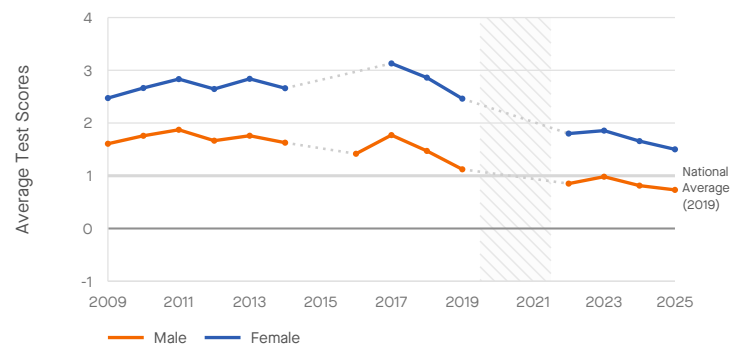
Trend in Reading Scores, by Student Income Level



Trend in Math Scores, by Student Gender



Trend in Reading Scores, by Student Gender

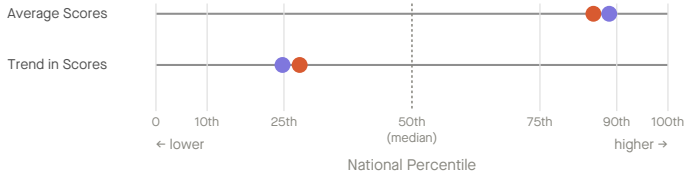


Cherry Hill School District, New Jersey

Academic Performance Rankings, 2022-2025, Relative to Other Districts in the U.S.



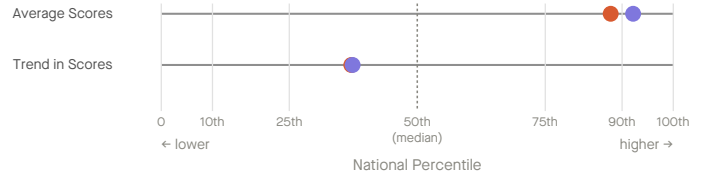
Math Ranks



| | Average | Trend |
|-----------------------------|---------------------------|--------------------------|
| Cherry Hill School District | 1,487 / 10,205 (85th pct) | 3,934 / 5,468 (28th pct) |
| Similar Districts Avg. | 1,172 / 10,205 (89th pct) | 4,117 / 5,468 (25th pct) |

Cherry Hill School District ranked higher than 85% of districts nationwide in average math performance during the 2022-25 school years (1,487th of 10,205 districts with available data).

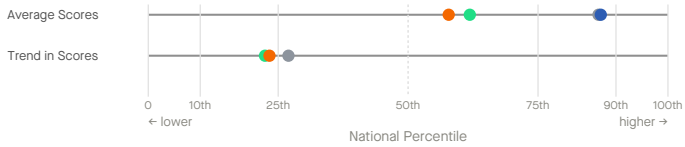
Reading Ranks



| | Average | Trend |
|-----------------------------|---------------------------|--------------------------|
| Cherry Hill School District | 1,233 / 10,076 (88th pct) | 3,568 / 5,673 (37th pct) |
| Similar Districts Avg. | 791 / 10,076 (92nd pct) | 3,553 / 5,673 (37th pct) |

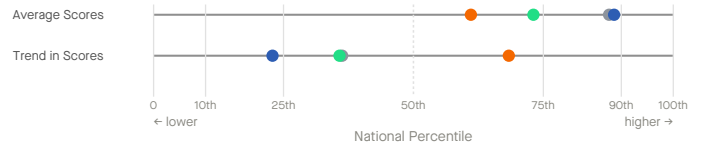
Cherry Hill School District ranked higher than 88% of districts nationwide in average reading performance during the 2022-25 school years (1,233rd of 10,076 districts with available data).

Math Ranks by Race/Ethnicity



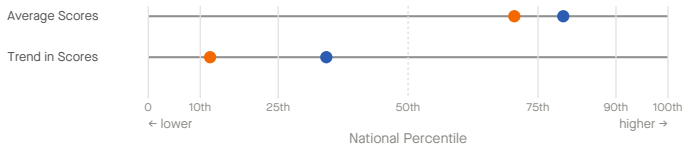
| | Average | Trend |
|----------|--------------------------|--------------------------|
| White | 1,165 / 8,707 (87th pct) | 2,616 / 3,582 (27th pct) |
| Black | 325 / 2,508 (87th pct) | N/A |
| Hispanic | 1,748 / 4,583 (62nd pct) | 1,032 / 1,330 (22nd pct) |
| Asian | 679 / 1,608 (58th pct) | 195 / 254 (23rd pct) |

Reading Ranks by Race/Ethnicity



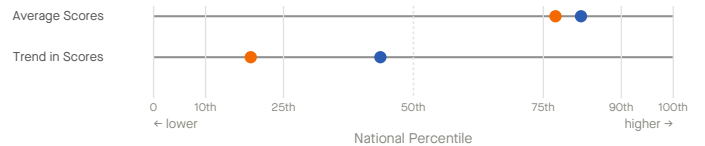
| | Average | Trend |
|----------|--------------------------|--------------------------|
| White | 1,086 / 8,785 (88th pct) | 2,512 / 3,941 (36th pct) |
| Black | 302 / 2,644 (89th pct) | 566 / 733 (23rd pct) |
| Hispanic | 1,256 / 4,662 (73rd pct) | 900 / 1,400 (36th pct) |
| Asian | 640 / 1,642 (61st pct) | 101 / 317 (68th pct) |

Math Ranks by Income



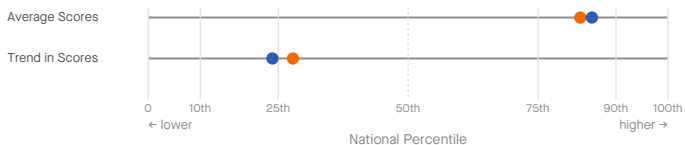
| | Average | Trend |
|----------------|--------------------------|--------------------------|
| Low-income | 2,625 / 8,875 (70th pct) | 2,516 / 2,855 (12th pct) |
| Not low-income | 1,711 / 8,489 (80th pct) | 2,056 / 3,127 (34th pct) |

Reading Ranks by Income



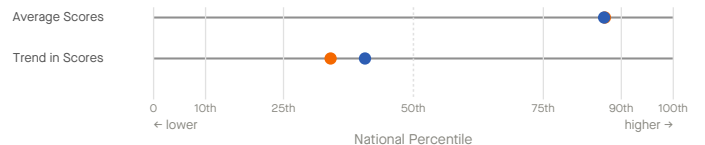
| | Average | Trend |
|----------------|--------------------------|--------------------------|
| Low-income | 2,038 / 8,987 (77th pct) | 2,591 / 3,186 (19th pct) |
| Not low-income | 1,527 / 8,596 (82nd pct) | 1,867 / 3,311 (44th pct) |

Math Ranks by Gender



| | Average | Trend |
|--------|--------------------------|--------------------------|
| Female | 1,435 / 8,509 (83rd pct) | 2,324 / 3,219 (28th pct) |
| Male | 1,244 / 8,497 (85th pct) | 2,262 / 2,971 (24th pct) |

Reading Ranks by Gender



| | Average | Trend |
|--------|--------------------------|--------------------------|
| Female | 1,141 / 8,670 (87th pct) | 2,297 / 3,483 (34th pct) |
| Male | 1,153 / 8,652 (87th pct) | 2,028 / 3,418 (41st pct) |

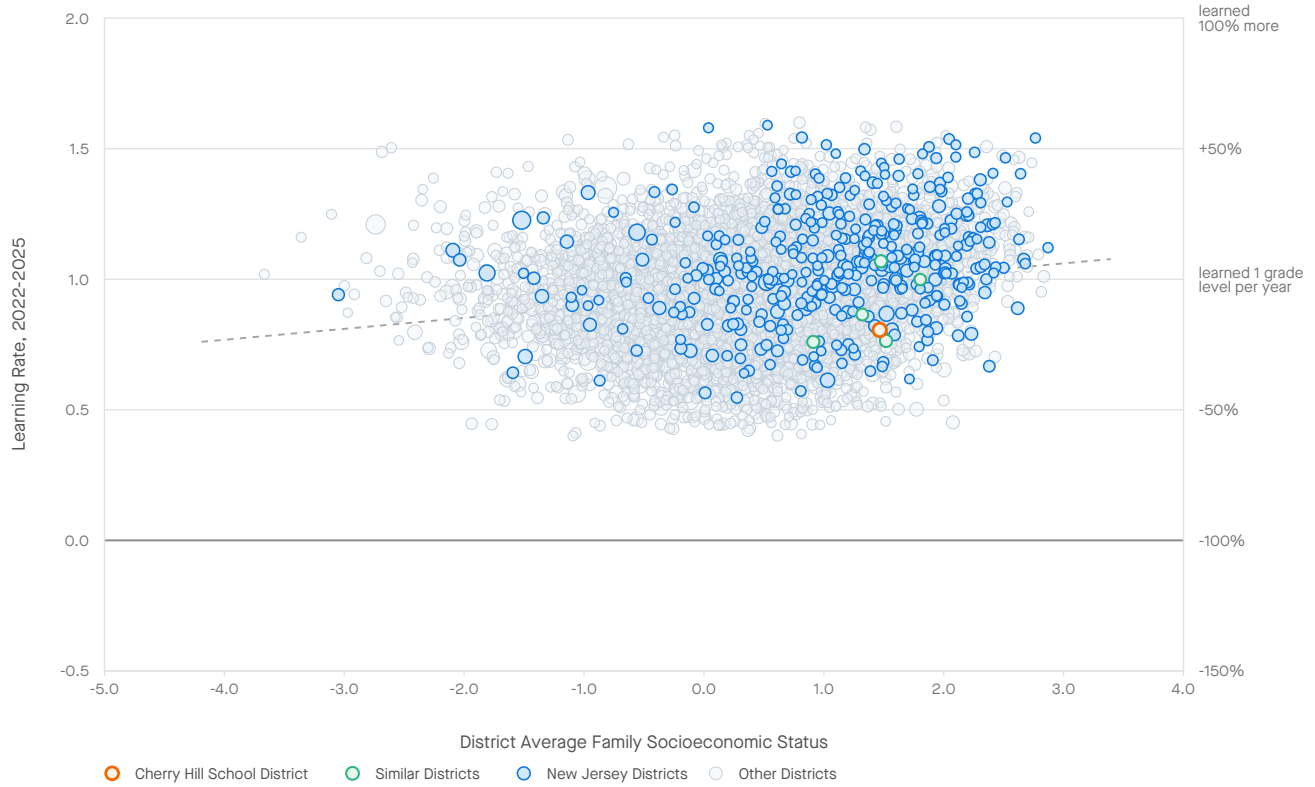


Cherry Hill School District, New Jersey



Average Grades 3-8 Learning Rates, 2022-2025, by District Socioeconomic Status

Learning rates measure how much students' scores improve as they progress from grade to grade. They are a better indicator of school quality than average test scores, which are influenced by a range of experiences outside of school.



Note: each bubble is a U.S. school district, with size proportional to district enrollment. Districts in New Jersey are highlighted. District socioeconomic status is a composite measure of a district's average family income, parental education, poverty rate, SNAP eligibility rate, unemployment rate, and female-headed household rate.

Learning Rates and Trends, 2022-2025

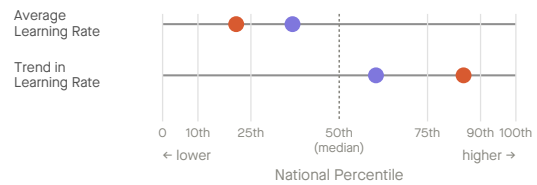
ALL STUDENTS

| | 2022-2025 Learning Rate | 2022-2025 Trend in Learning Rates |
|------------------------------------|-------------------------|-----------------------------------|
| Cherry Hill School District | 0.81 | 0.04 |
| Similar Districts Avg.* | 0.88 | 0.00 |
| New Jersey | 1.04 | 0.00 |

Learning rates are measured in grade levels of skills gained per year and are averaged over math and reading. The national average learning rate is 1.0. For example, the first row above reads: "Students in Cherry Hill School District learned an average of 0.81 grade levels/year during 2022-2025. Learning rates in Cherry Hill School District have been changing at a rate of +0.04 grade levels/year since 2022."

*Similar districts are the nearest matches within the same state based on socioeconomic status, demographics, and size. Similar districts for Cherry Hill School District are Fair Lawn Public School District, Mount Laurel Township School District, Sayreville School District, Moorestown Township Public School District, and Mount Olive Township School District.

Learning Rate Rankings



| | Average | Trend |
|-----------------------------|--------------------------|--------------------------|
| Cherry Hill School District | 6,451 / 8,147 (21st pct) | 899 / 6,065 (85th pct) |
| Similar Districts Avg. | 5,152 / 8,147 (37th pct) | 2,403 / 6,065 (60th pct) |

Cherry Hill School District ranked higher than 21% of districts nationwide in average learning rates during the 2022-25 school years (6,451st of 8,147 districts with available data).



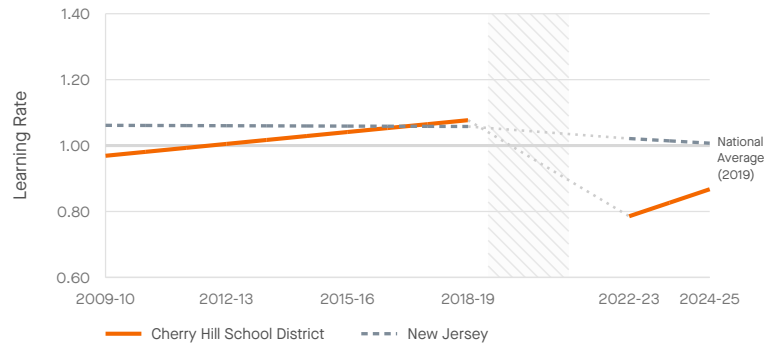
Cherry Hill School District, New Jersey

Trends in Average Grade 3-8 Learning Rates, 2009-2025, by Student Subgroup

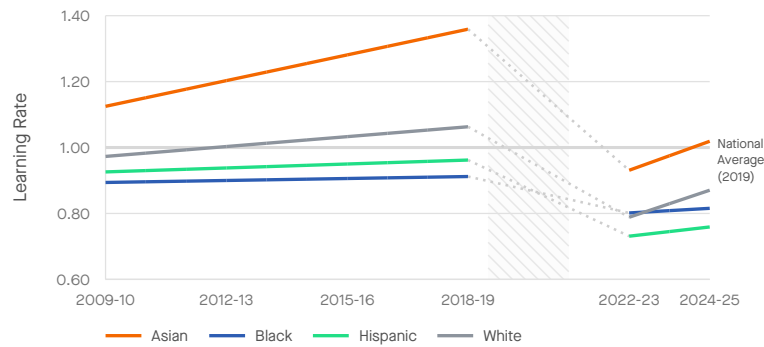


Trends in learning rates measure how annual learning rates change over time. They are a better indicator of changes in school quality than trends in average test scores, which are influenced by a range of experiences outside of school.

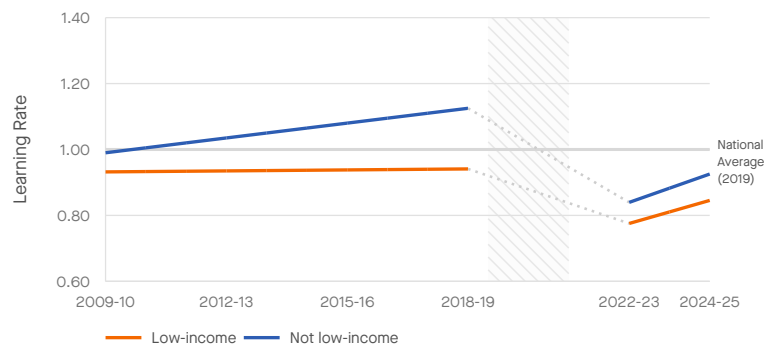
Trend in Learning Rates (All Students)



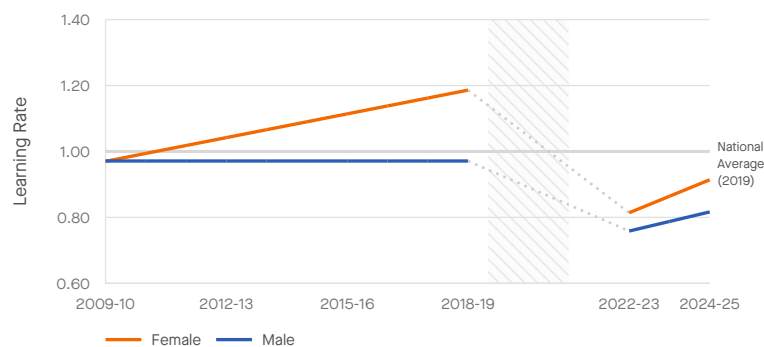
Trend in Learning Rates, by Student Race/Ethnicity



Trend in Learning Rates, by Student Income Level



Trend in Learning Rates, by Student Gender



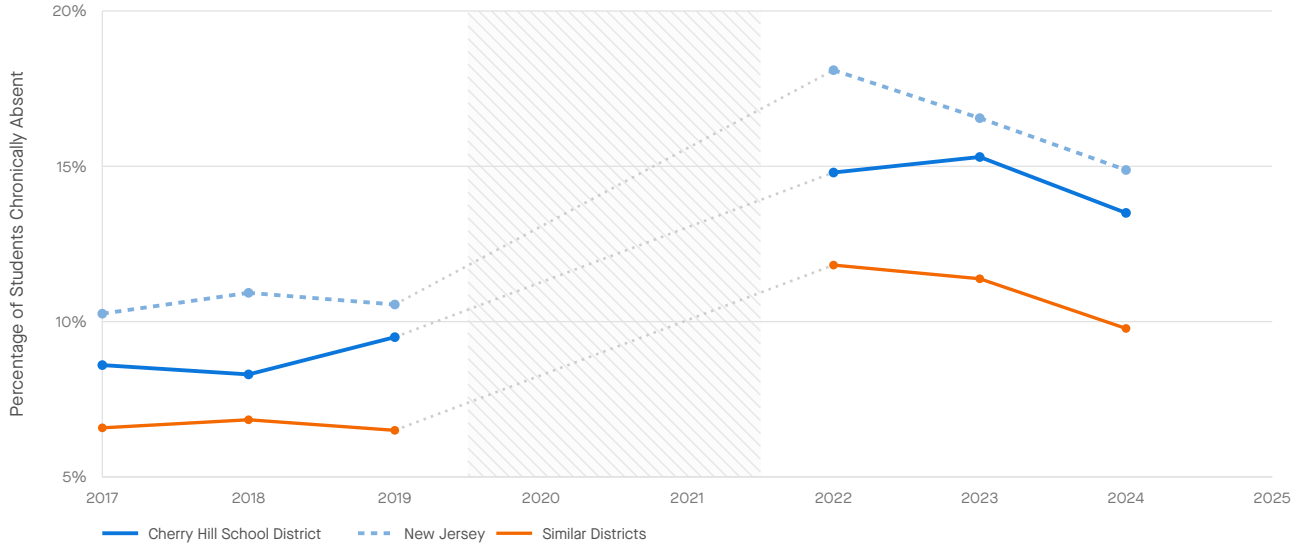
Cherry Hill School District, New Jersey



Trends in Chronic Absenteeism

Chronic absenteeism rates indicate the proportion of students who were absent 10% or more of the school year.

Trends in Chronic Absenteeism



Trends in Chronic Absenteeism

ALL STUDENTS

| | 2017-2019 Avg. Chronic Absenteeism | 2022-2025 Avg. Chronic Absenteeism | Change |
|------------------------------------|---------------------------------------|---------------------------------------|--------|
| Cherry Hill School District | 8.8 | 14.5 | +5.7 |
| Similar Districts Avg.* | 6.6 | 11.0 | +4.4 |
| New Jersey | 10.6 | 16.5 | +5.9 |

*Similar districts are the nearest matches within the same state based on socioeconomic status, demographics, and size. Similar districts for Cherry Hill School District are Fair Lawn Public School District, Mount Laurel Township School District, Sayreville School District, Moorestown Township Public School District, and Mount Olive Township School District.

Absenteeism data courtesy of [Nat Malkus, American Enterprise Institute](#).



Cherry Hill School District, New Jersey



Changes in Average Math Scores in New Jersey Districts, 2019-2025 and 2022-2025, by District Free/Reduced-Price Lunch Eligibility Rate

Change in Math Scores, 2019-2025



Figure produced by the Center for Education Policy Research at Harvard University

○ Largest Districts ◆ State Average

Change in Math Scores, 2022-2025



Figure produced by the Center for Education Policy Research at Harvard University

○ Largest Districts ◆ State Average



Cherry Hill School District, New Jersey



Changes in Average Reading Scores in New Jersey Districts, 2019-2025 and 2022-2025, by District Free/Reduced-Price Lunch Eligibility Rate

Change in Reading Scores, 2019-2025



Figure produced by the Center for Education Policy Research at Harvard University

○ Largest Districts ◆ State Average

Change in Reading Scores, 2022-2025



Figure produced by the Center for Education Policy Research at Harvard University

○ Largest Districts ◆ State Average



Cherry Hill School District, New Jersey

Change in Chronic Absenteeism in New Jersey Districts, 2019-2024,
by District Free/Reduced-Price Lunch Eligibility Rate



Change in Chronic Absenteeism, 2019-2024



Figure produced by the Center for Education Policy Research at Harvard University

○ Largest Districts ◆ State Average





Notes & Acknowledgments

This report summarizes academic performance in Cherry Hill School District from 2008-09 through 2024-25, using data from the Stanford Education Data Archive (SEDA). SEDA is a national database of U.S. academic performance produced by the Educational Opportunity Project at Stanford University. The SEDA data are based on the standardized accountability tests in math and reading language arts (RLA) administered by each state to all public-school students in grades 3-8.

The raw test score data used to construct the SEDA 2022-2025 estimates here were graciously provided to us by Emily Oster and Clare Halloran at the [Education Data Center](#). The raw test score data used to construct the SEDA 2009-2019 estimates are available through the [EDFacts](#) data system at the U.S. Department of Education, and were provided to us by the National Center for Education Statistics (NCES). Detailed NAEP data used to harmonize test scores across states was provided by NCES and the National Assessment Governing Board. Chronic absenteeism data were provided by [Nat Malkus at the American Enterprise Institute](#). Funding to construct and analyze SEDA was provided by the Gates Foundation. Funding for the Education Scorecard was provided by the Carnegie Corporation of New York, Bloomberg Philanthropies, Joyce Foundation, Kenneth C. Griffin and Citadel Catalyst. The findings and opinions expressed in our research and reported here are those of the authors alone; they do not represent the views of any of the above organizations.

Citation:

Educational Opportunity Project. (2026). "Trends in Academic Performance in Cherry Hill School District." Report version 2025.1. Available at: https://edopportunity.org/reports/trends/2025/NJ/report_NJ_3403000_cherry-hill-school-district.pdf

